



UH8 PURE & POROUS

THE PURE & POROUS SURFACE IS WELL STRUCTURED AS SLA AND CLEAN AS RBM

Pure & Porous modification of dental implant's surface unites the well-known advantages of **SLA*** and **RBM** types** of the surface (highly developed porosity for SLA and high surface cleanliness for RBM), and is free from their drawbacks (occasional remains of blasting particles for SLA, and is not well structured surface topography for RBM).

***SLA** is Alumina (or Sand) Blasted, Large-grit, Acid-etched surface of dental implants, pioneered by Strauman.

****RBM** is a dental implants surface treated by Resorbable Blasted Media (Hydroxyapatite and other Calcium Phosphates) following by light acid washing, pioneered by Lifecore.

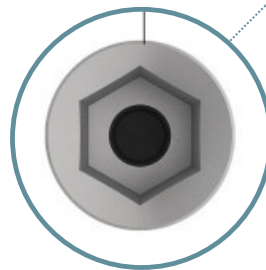
INTERNAL HEX

Design Features

Extremely precise internal hex
One platform for all diameters

Advantages

Perfect implant-abutment connection
Precision restoration process
No micro movements, less bone loss



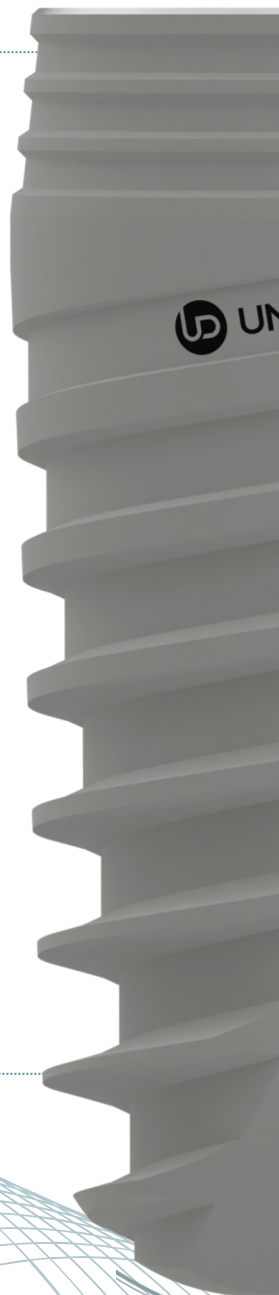
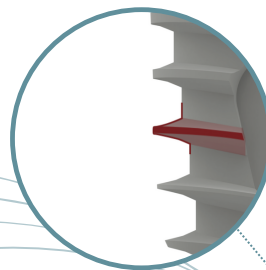
APICAL PART

Design Features

Narrow body
Sharp threads
Three spiral channels
Condensing taper
Domed apex

Advantages

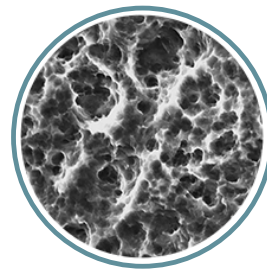
Helps to prevent damage
of anatomical structures





EXCEPTIONALLY CLEAN

SEM micro- photographs X50



VERY POROUS

SEM micro- photographs X 2000



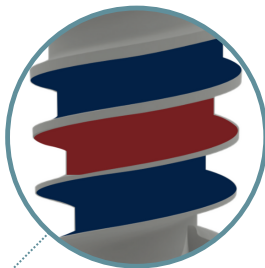
CORONAL PART

Design Features

- Micro rings
- Bone platform shifting
- Rough surface to the top

Advantages

- Greater surface area & Better load distribution
- Less crestal resorption
- Decreased crestal stress



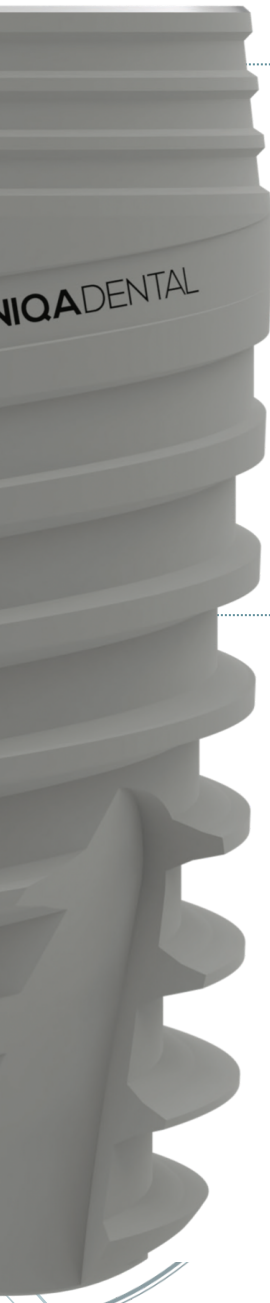
IMPLANT BODY & THREADS

Design Features

- Tapered body with dual thread of 2 mm
- Highly expressed conical core
- Osteotomy like condensing body
- Threads become thinner in the apical direction

Advantages

- High primary stability
- Bone condensing & Easy insertion
- Self-drilling & Self-tapping



IMPLANTS DIMENSIONS TABLE

| Diameter/ Height | 3.3 mm | 3.75 mm | 4,2 mm | 5.0 mm |
|---------------------|----------|----------|----------|----------|
| 8 mm | USI-3308 | USI-3708 | USI-4208 | USI-5008 |
| 10 mm | USI-3310 | USI-3710 | USI-4210 | USI-5010 |
| 11,5 mm | USI-3311 | USI-3711 | USI-4211 | USI-5011 |
| 13 mm | USI-3313 | USI-3713 | USI-4213 | USI-5013 |
| 16 mm | USI-3316 | USI-3716 | USI-4216 | USI-5016 |

PROSTHETIC PARTS

MULTI UNITS

- D-type
- Accessories for Multi units D-type

CAD / CAM

- Ti-base
- Digital analog
- Scan

ABUTMENTS

- Angled abutments
- Straight abutment
- Healing caps
- Screws

OVERDENTURE

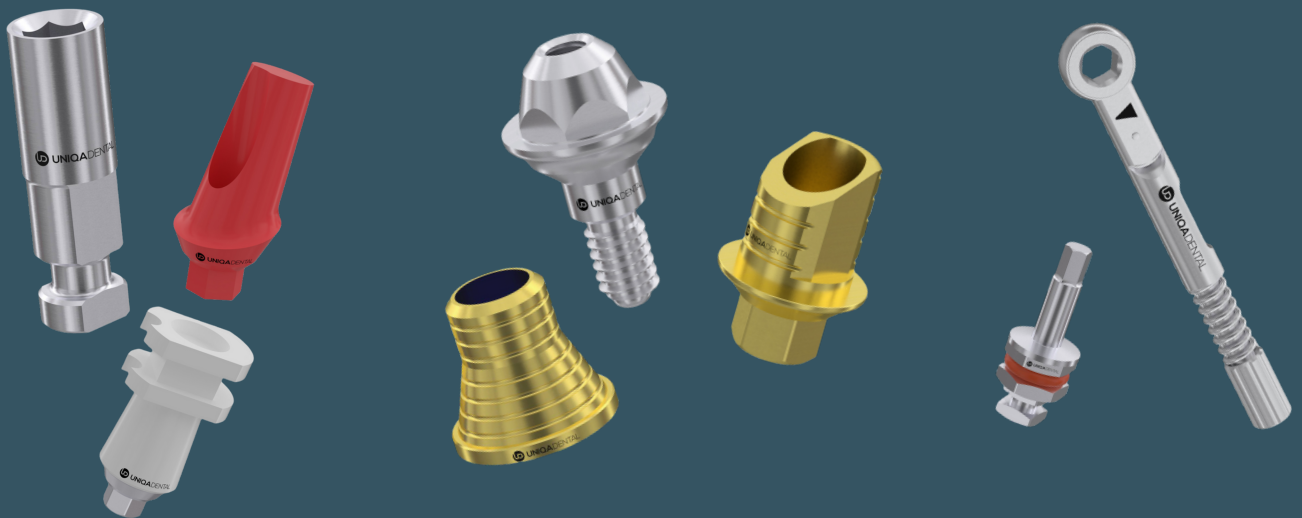
- Ball attachments
- DLOC

LABORATORY

- Transfer / Impression
- Castable abutments / UCLA
- Analog

INSTRUMENTS

- Drills
- Screw drivers
- Tools



Our products compatible with:



VAGUSDENT

Λεωφόρος Βουλιαγμένης 216,
Τ.Κ. 172 37 Δάφνη Αθήνα
Τηλ.: 216 700 7137
info@vagusdent.gr

www.vagusdent.gr

